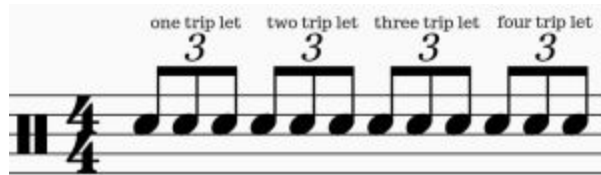


TRIPLET ACCENT GRID

Composed by Matt Dudley

Applying accents to the eighth note triplet grid. In this exercise we'll be playing eighth note triplets with different hand combinations and accent patterns. Still keep in mind the four basic stroke types while executing these different accent patterns.

How to count eighth note triplets. It's a group of three notes that are counted as "one trip let, two trip let, three trip let, four trip let". In this pattern we are using alternating strokes (R, L, R, L)



Section 1. Individual hands.

Hand combinations and stroke types for Section 1:

Measure 1: $R r r R r r$ / $L l l L l l$

Measure 2: $r R r r R r$ / $l L l l L l$

Measure 3: $r r R r r R$ / $l l L l l L$

Measure 4: $R R r R R r$ / $L L l L L l$

Measure 5: $r R R r R R$ / $l L L l L L$

Measure 6: $R r R R r R$ / $L l L L l L$

Measure 7: $R R R R R R$ / $L L L L L L$

Measure 8: $r r r r r r$ / $l l l l l l$

Section 2. Unison R/L

Unison R/L

Section 3. Alternating

Musical notation for Section 3: Alternating. The first staff shows four measures with rhythmic patterns and sticking: *R l r L r l*. The second staff starts at measure 5 and continues the patterns with accents and triplets.

Section 4. Right Hand Lead

Musical notation for Section 4: Right Hand Lead. The first staff shows four measures with rhythmic patterns and sticking: *R l l*, *l R l*, *l l R*, *R R l*. The second staff starts at measure 5 and continues the patterns with accents and triplets.

Section 5. Left Hand Lead

Musical notation for Section 5: Left Hand Lead. The first staff shows four measures with rhythmic patterns and sticking: *L r r*, *r L r*, *r r L*, *L r r*. The second staff starts at measure 5 and continues the patterns with accents and triplets.

Tip! First learn the triplet pattern at a slow tempo using alternating strokes so that you have an understanding of the rhythm. Next move on to the different exercises applying the different sticking patterns and accent patterns. Remember to keep those stroke types in check! All non accented notes should be played low (2"-3"). Play to a metronome using eighth note triplets starting at 40 BPM so that you can execute each note accurately. Next try playing to quarter note pulse on the metronome. Slowly bump up the tempo as you practice in increments of 5.